

eTime Track Lite

Web Server

Configuration

For windows 7

Essential Steps for Creating Web Setup

Step - 1

Download Web App from following Link – <http://www.etimetracklite.com>

Step - 2

Extract eTimeTrack-Lite – Web Application.

Step - 3

Select the extracted file then select Right click Option, properties and remove the read only.

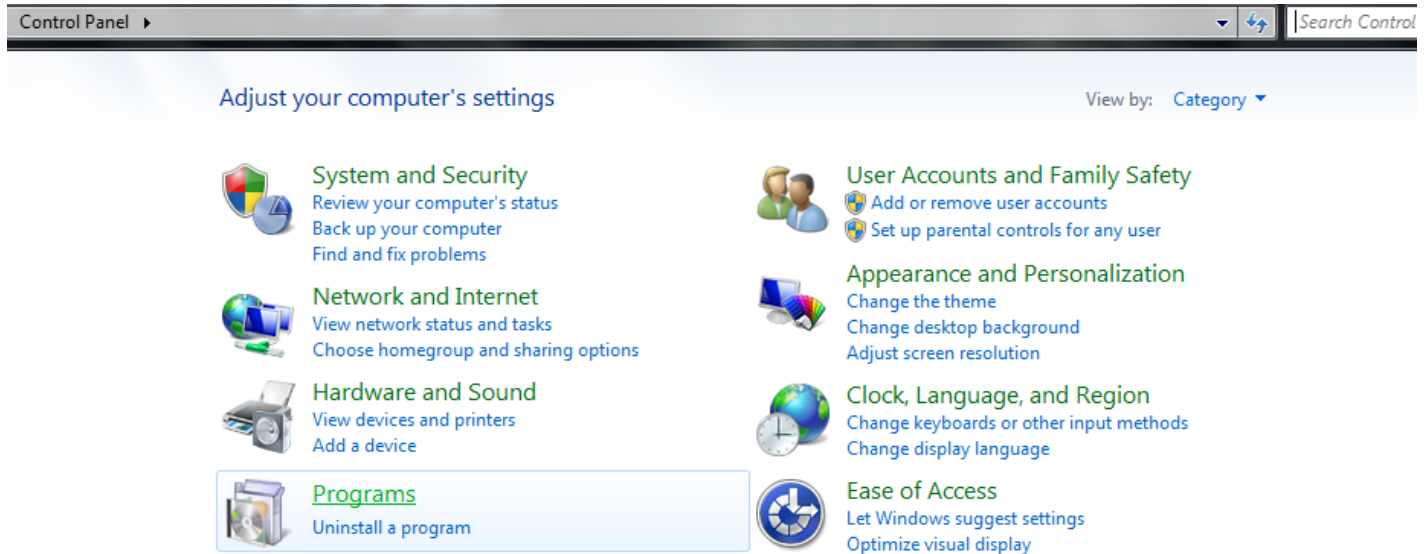
Step – 4

Go to the Control Panel.



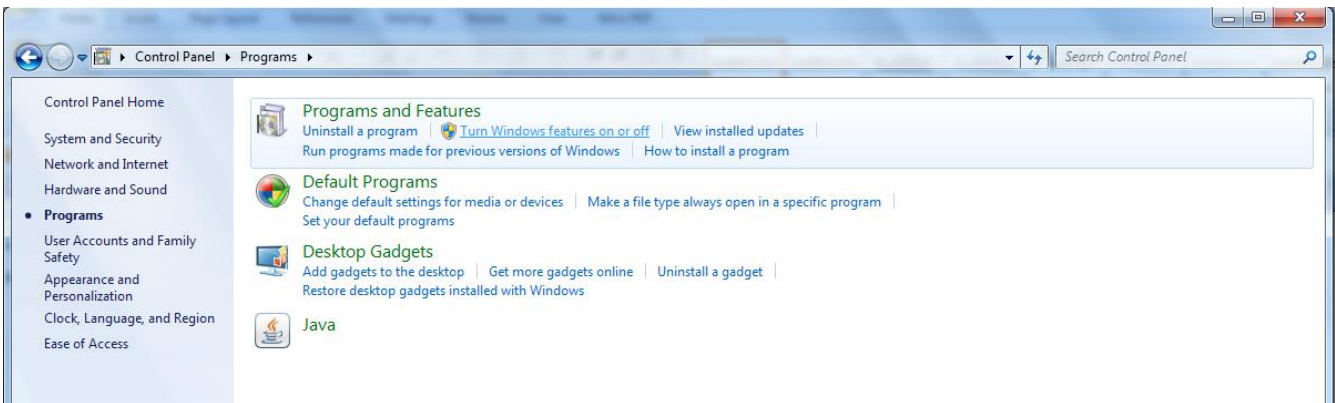
Step – 5

Click on Programs.

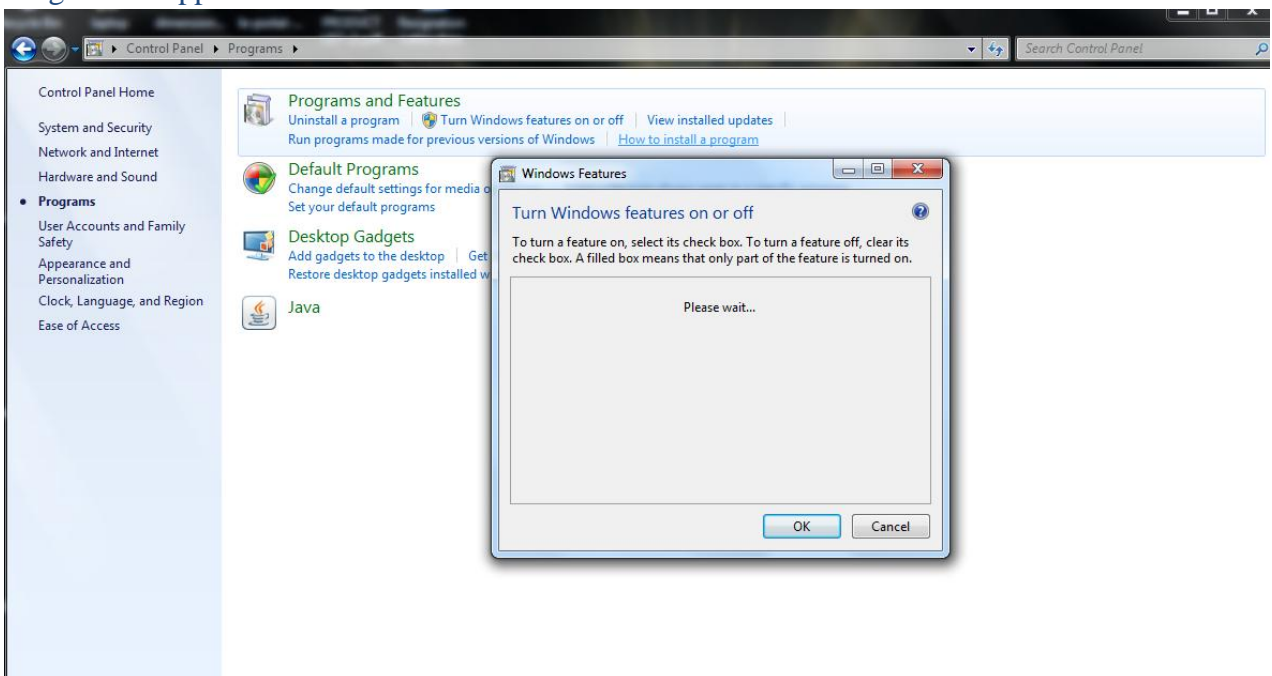


Step – 6

Click on "Turn windows feature on or off".



The Dialogue Box appears.

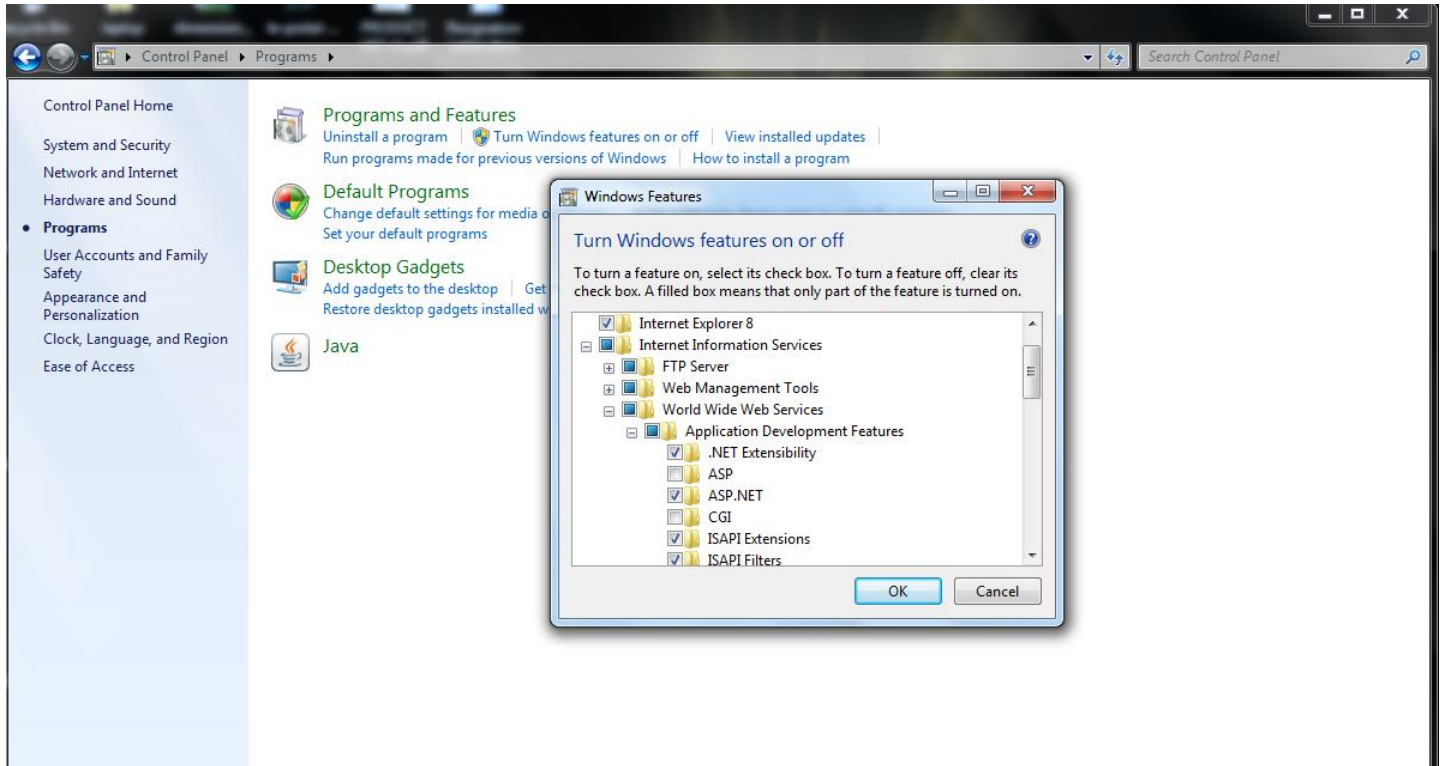


Step – 7

In this Dialogue Box Check mark the “Internet Information Services” (IIS).

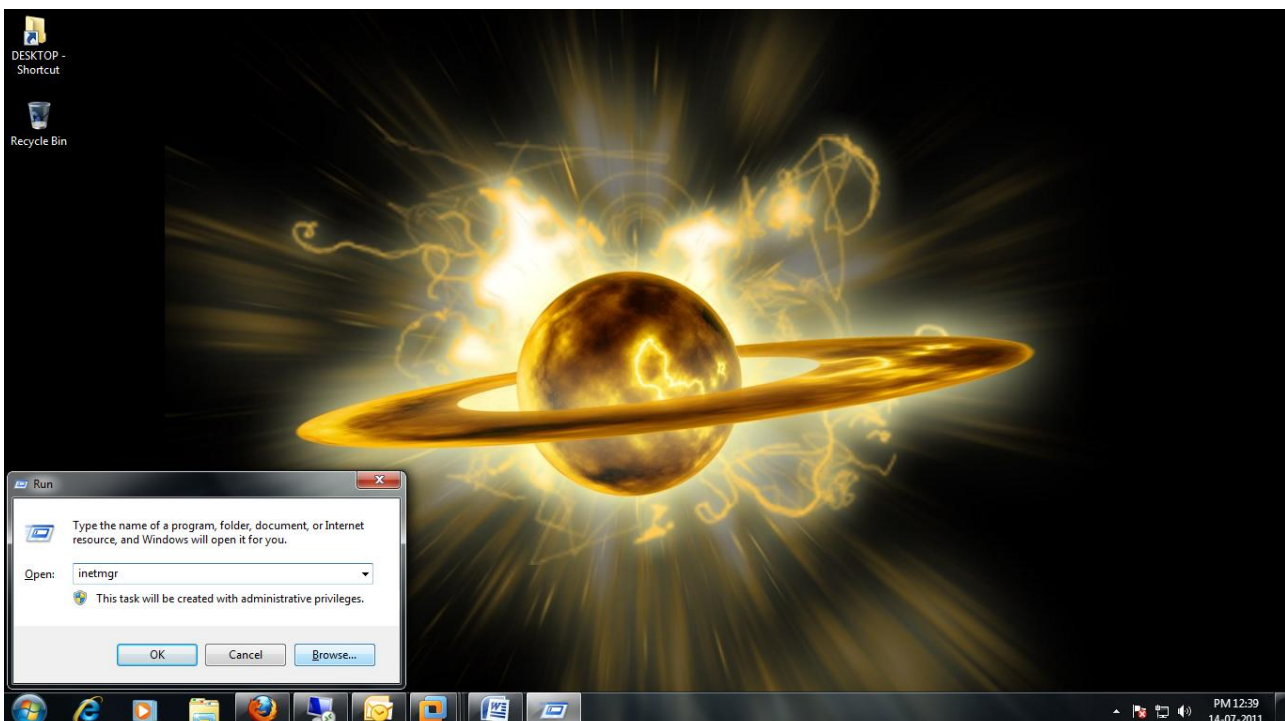
In World Wide Web Services Check Mark the “ASP.NET” and click on ‘OK’.

It will install the IIS & ASP.NET, Finish the installation.



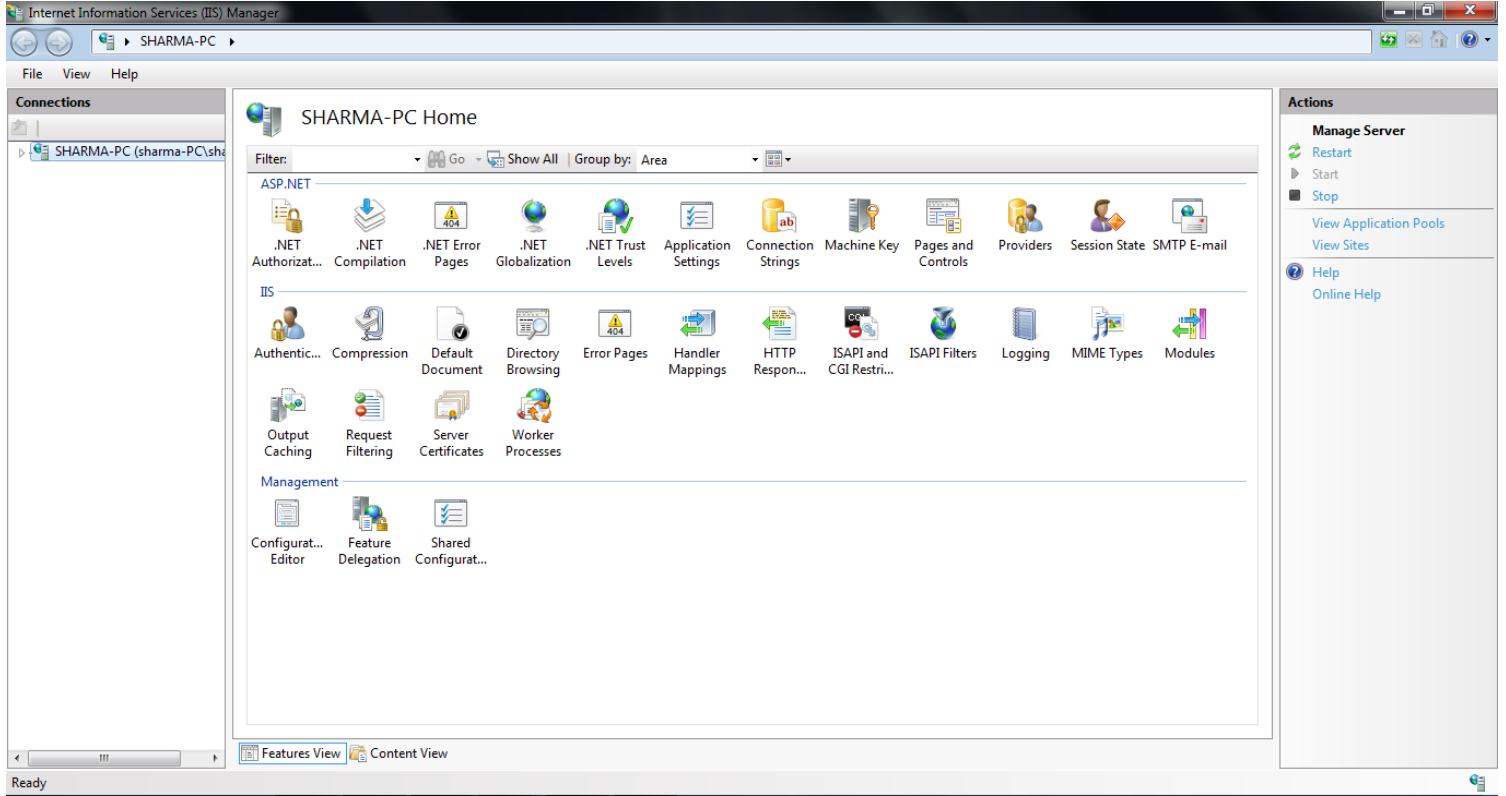
Step – 8

Open IIS (Internet Service Provider) From Control Panel --> Administrative Tool --> Internet Information Services or open the Run Command & Type inetmgr and Click Ok to Run IIS.

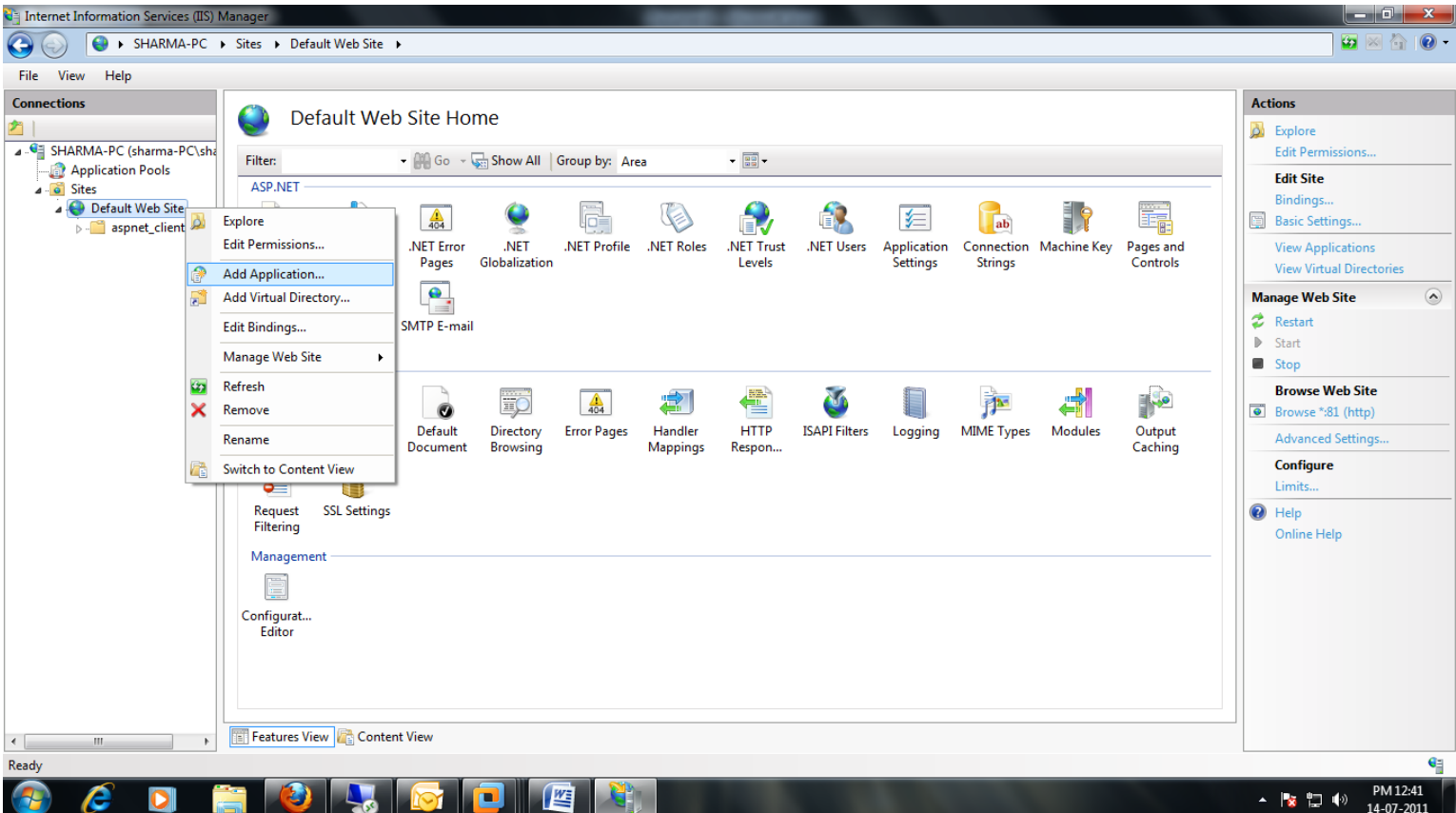


Step – 9

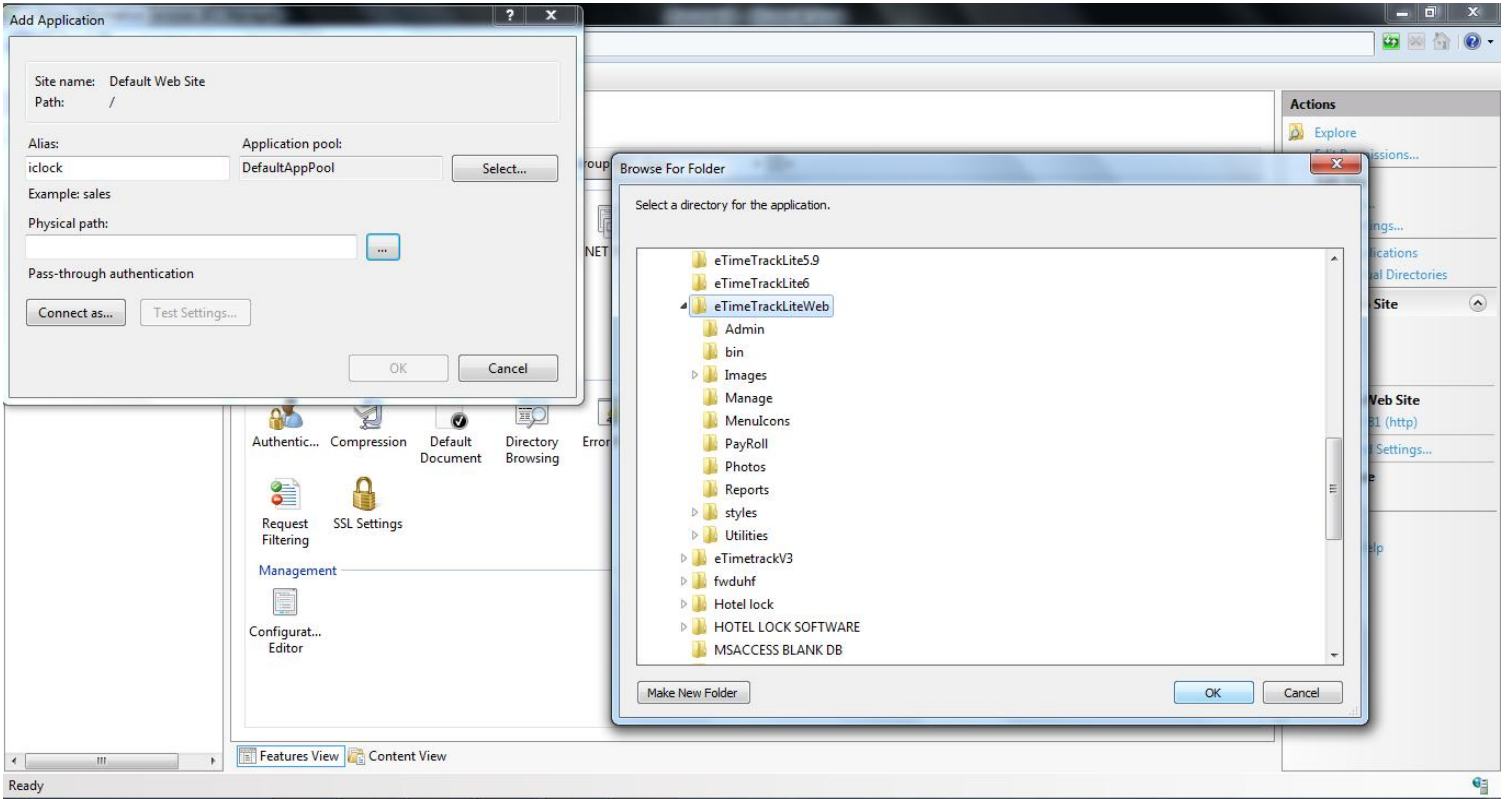
Explore the local host --> sites list.



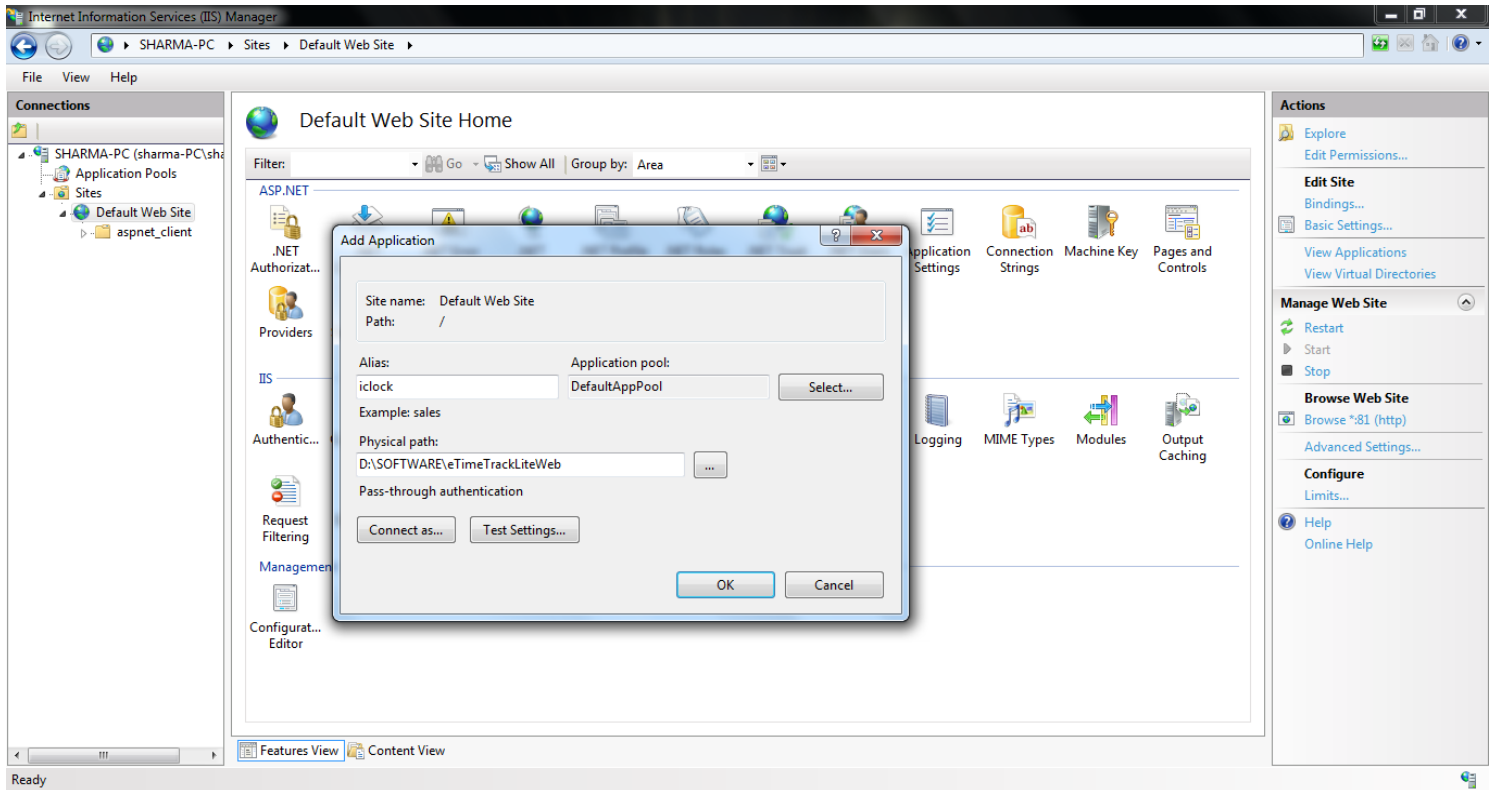
In sites list Right Click on Default Web site --> Click on Add Application... Dialogue Box appears.



Here in this Dialogue box you need to enter Alias (iclock) Name, Select the path of eTime track lite web Application were you have stored.

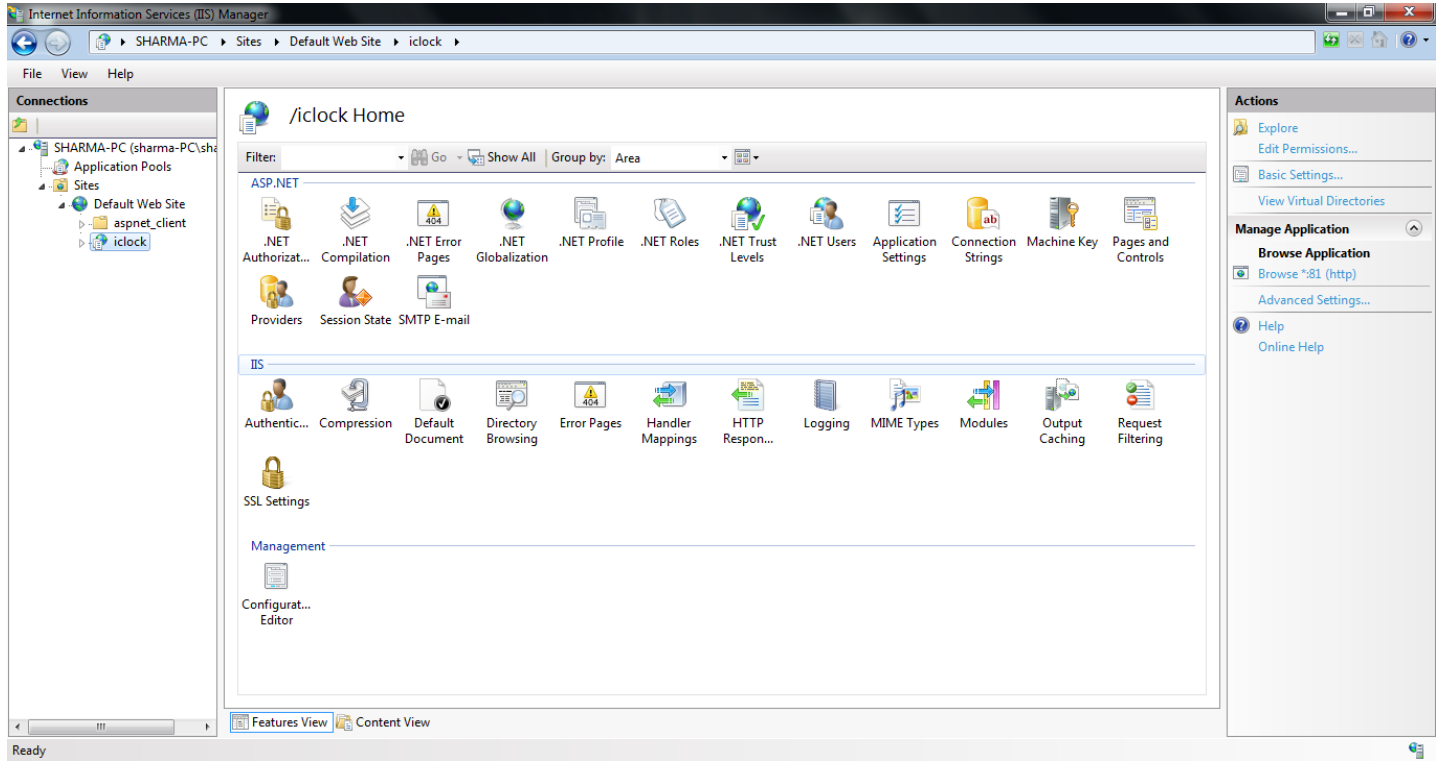


After selecting the physical path click on 'Ok'.



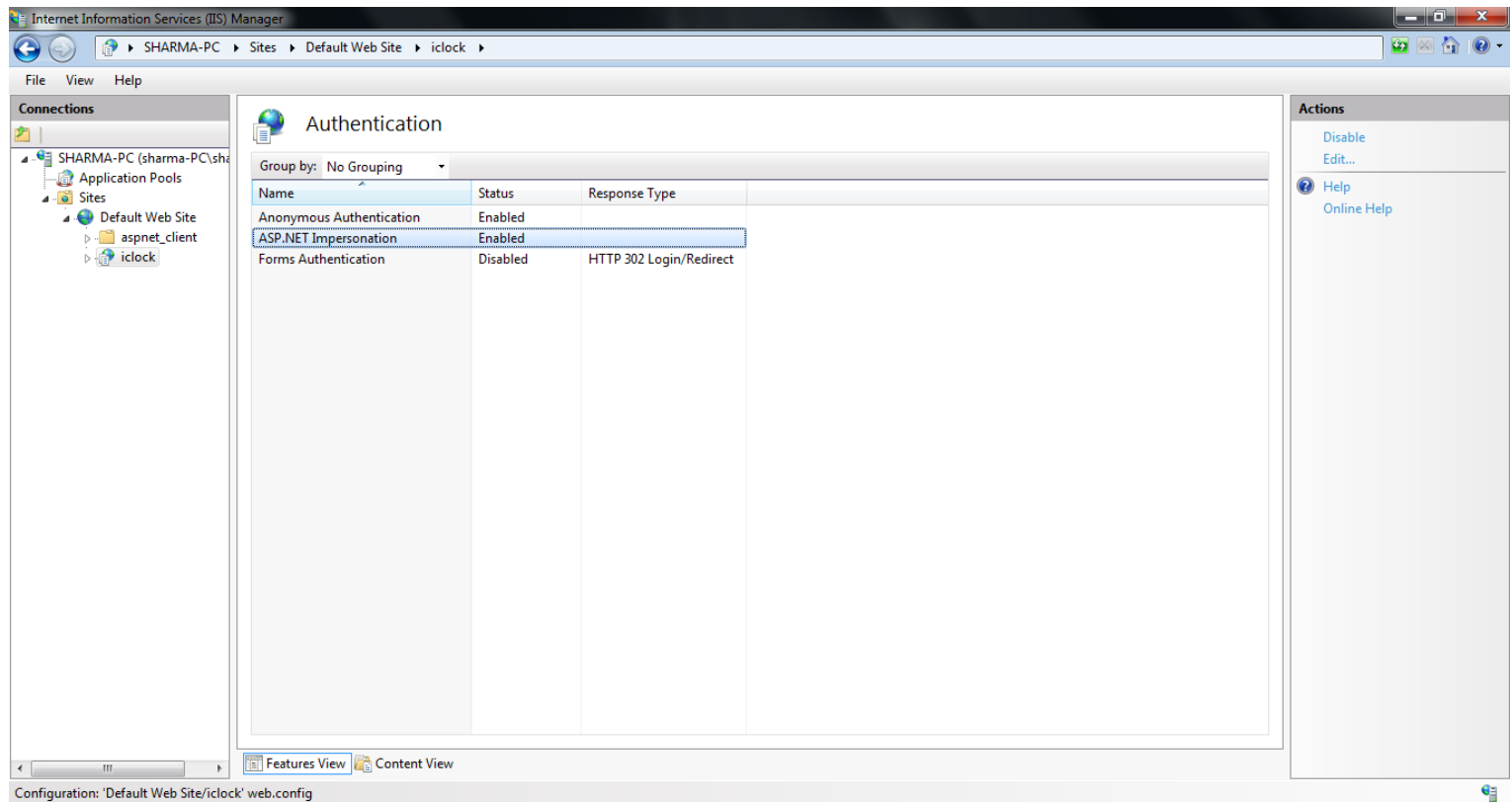
Step – 10

The site will be added, by Alias Name (iclock).



Step – 11

Double click on configure Authentication setting for site and application and Enable the ASP.NET Impersonation.



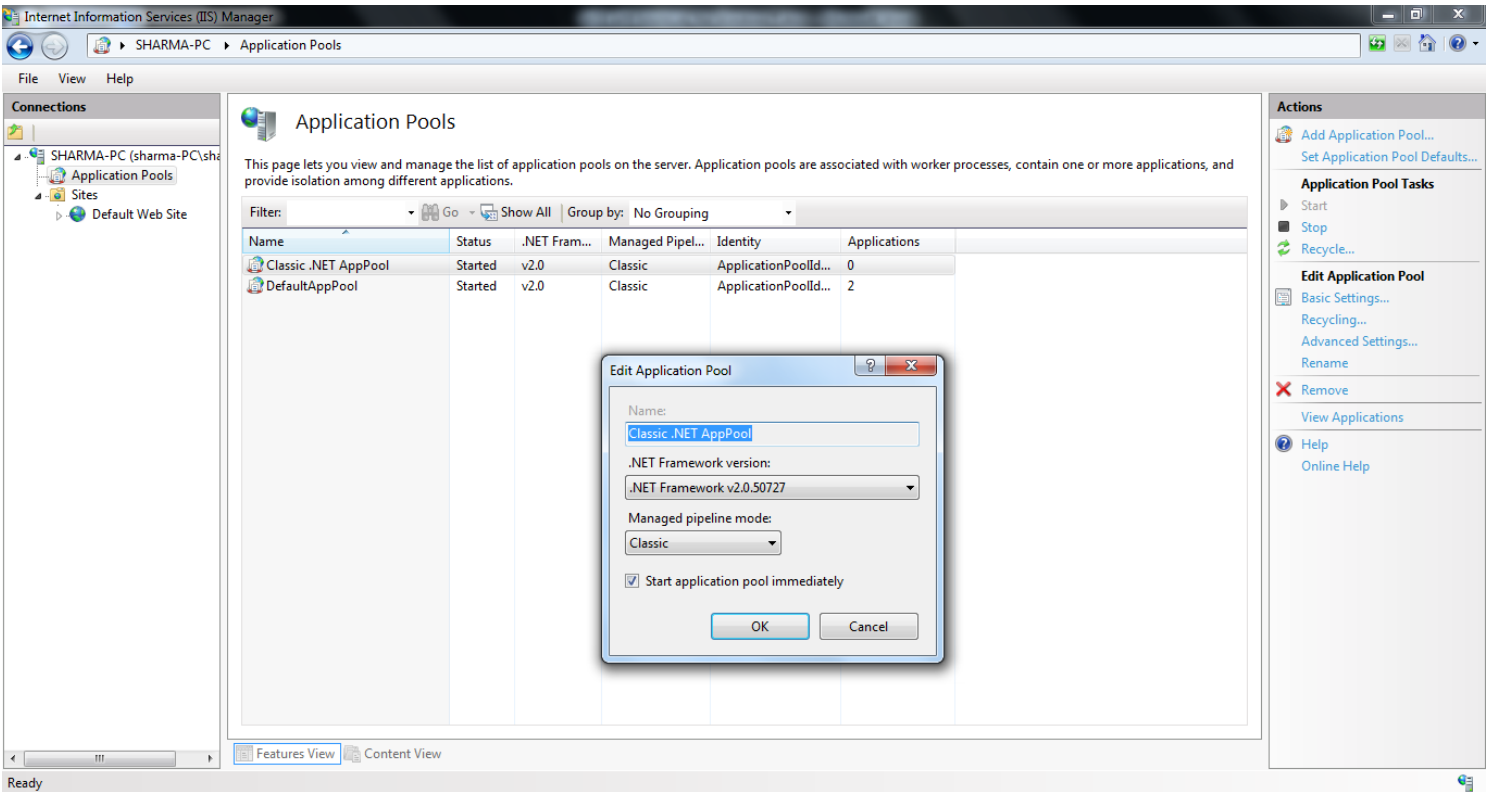
Step – 12

Click on Application Pools -->

Right Click on “Classic .NET App pools” -> Basic Settings in Dialogue box -->managed pipeline mode Change integrated to Classic.

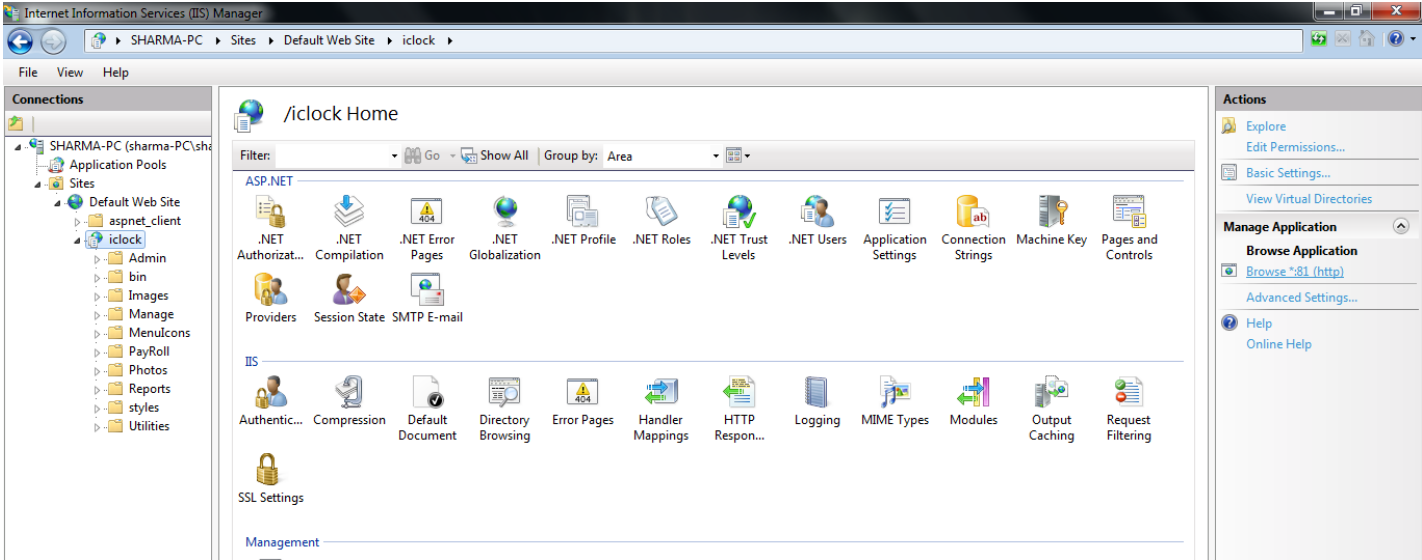
Right Click on “Default App pools” --> Basic Settings in Dialogue box -->managed pipeline mode Change integrated to Classic.

Click ‘OK’ and finish



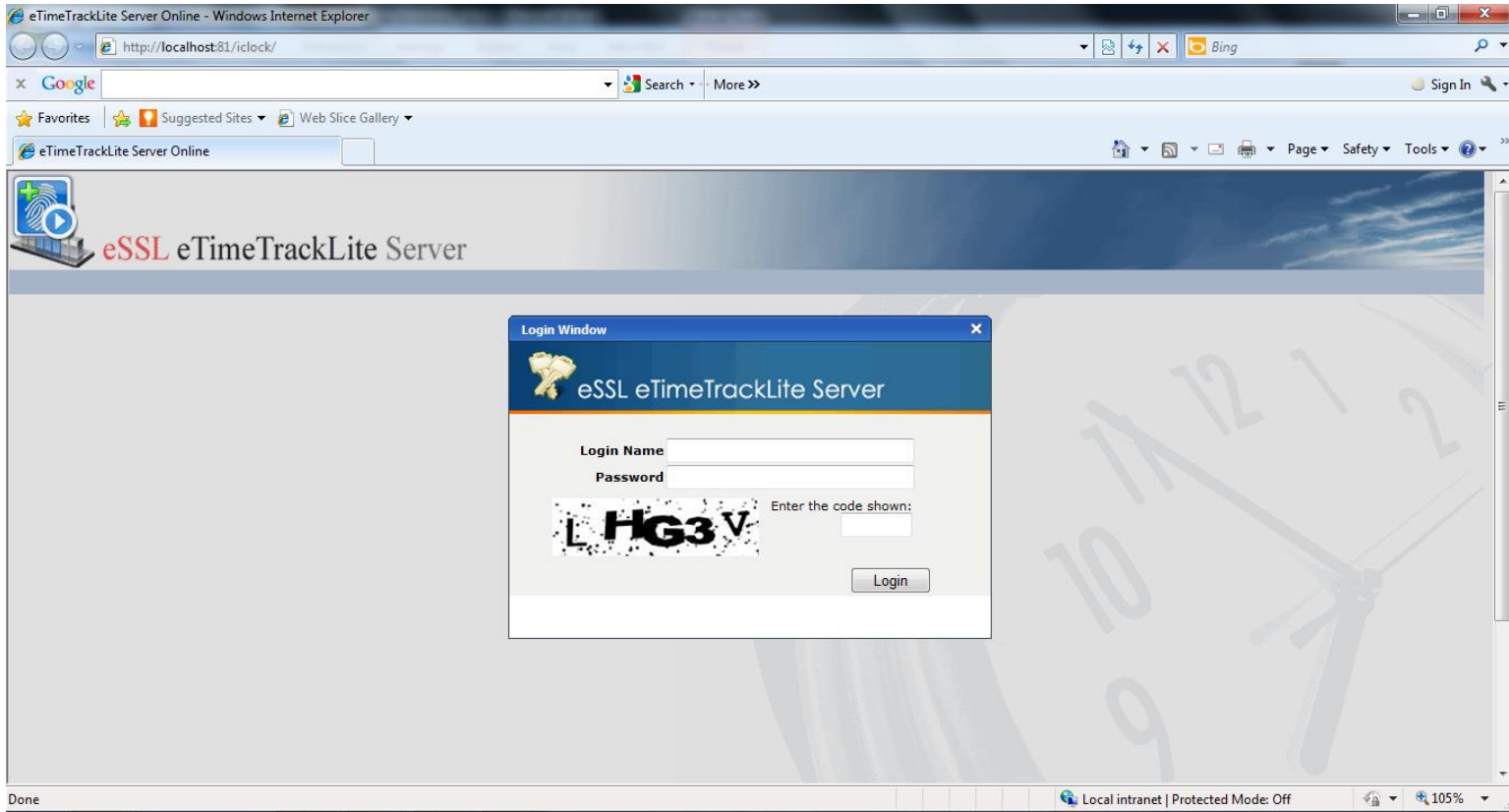
Step – 13

Now Click on Alias Name (iclock) in Left Hand Panel and On Right Side. Click on “Browse”



This is the LOGIN Screen of eTime Track lite of Web Application.

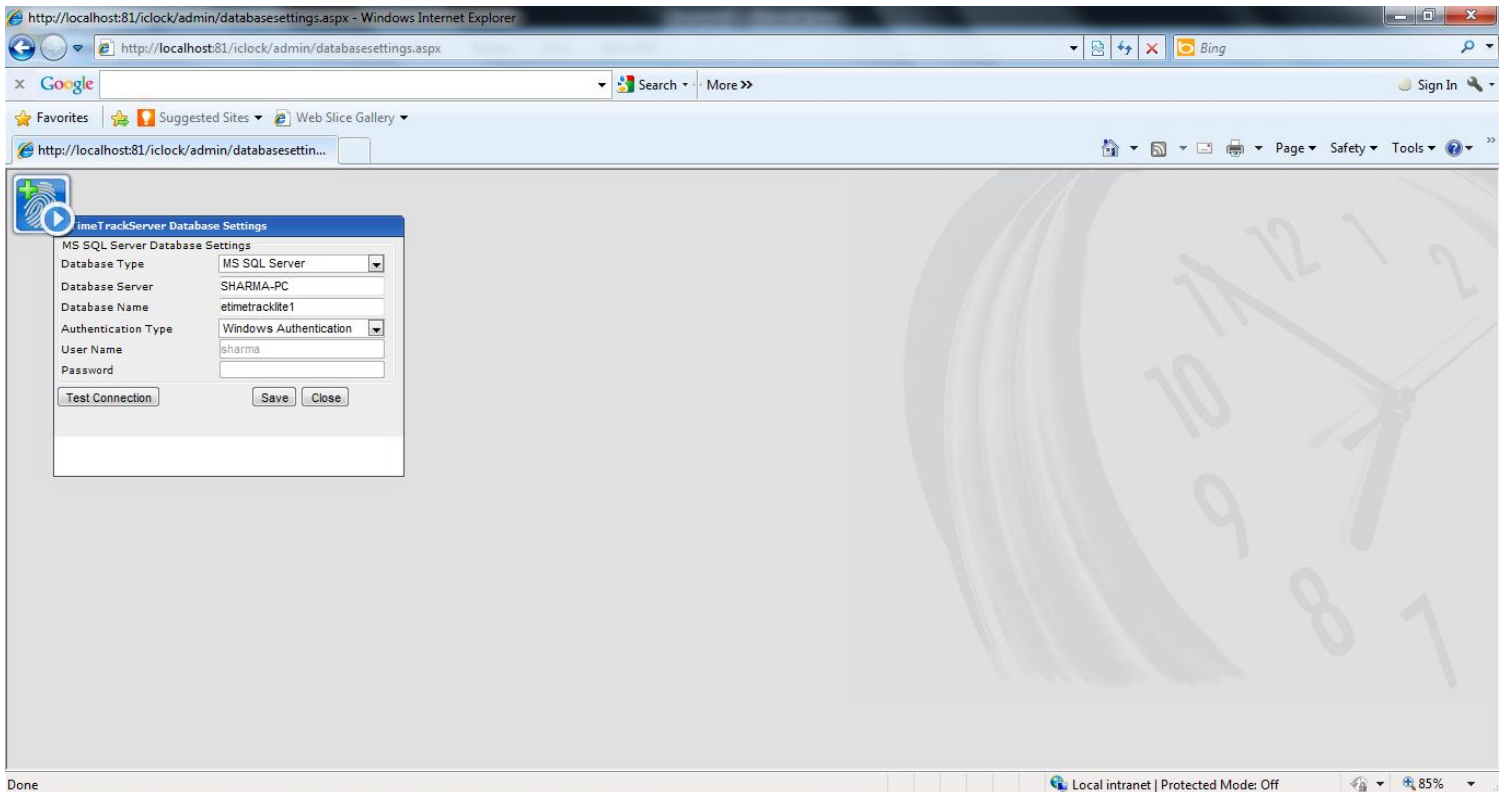
NOTE:-Before LOGIN Set the Database Setting



Step – 14

To configure database setting use “/admin/databasesettings.aspx” after Alias Name (iclock).

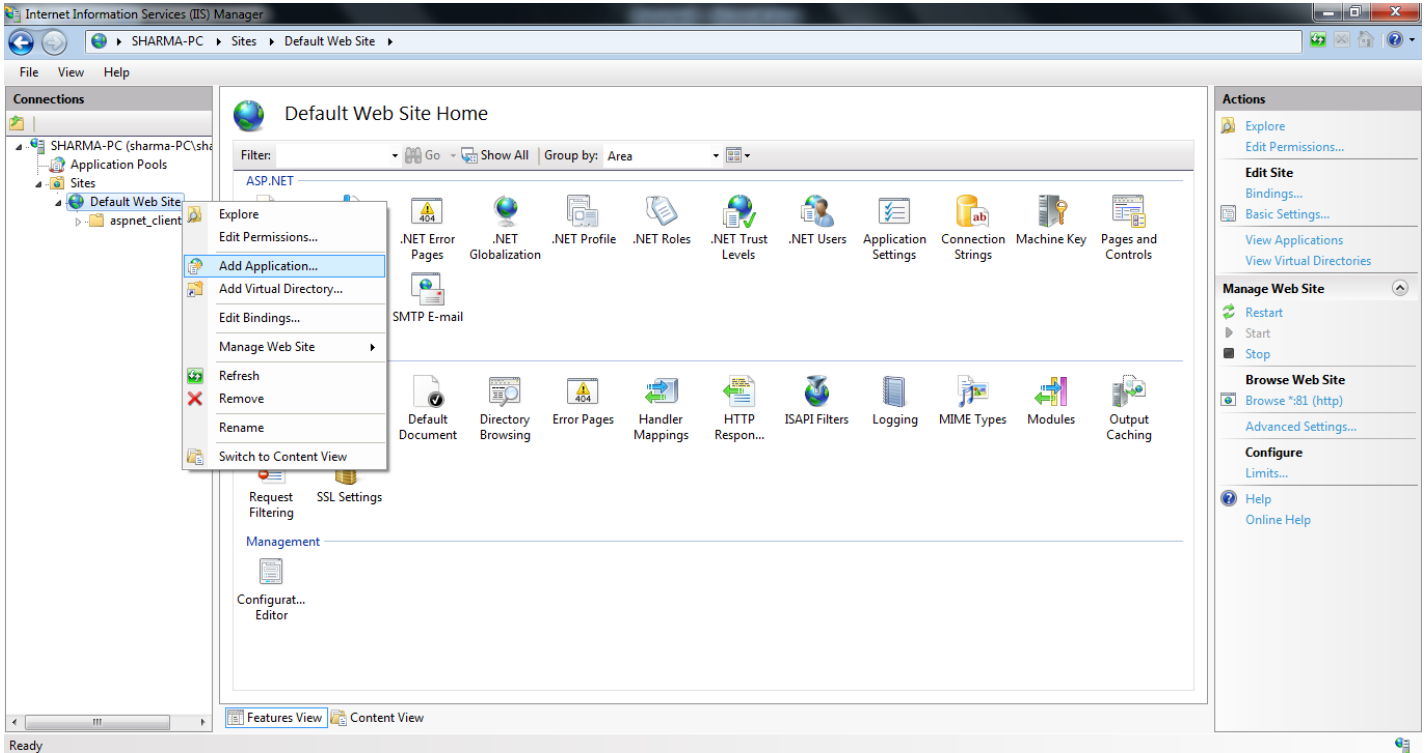
For example: [Http://localhost:81/iclock/admin/databasesettings.aspx](http://localhost:81/iclock/admin/databasesettings.aspx) (:81 is port number).



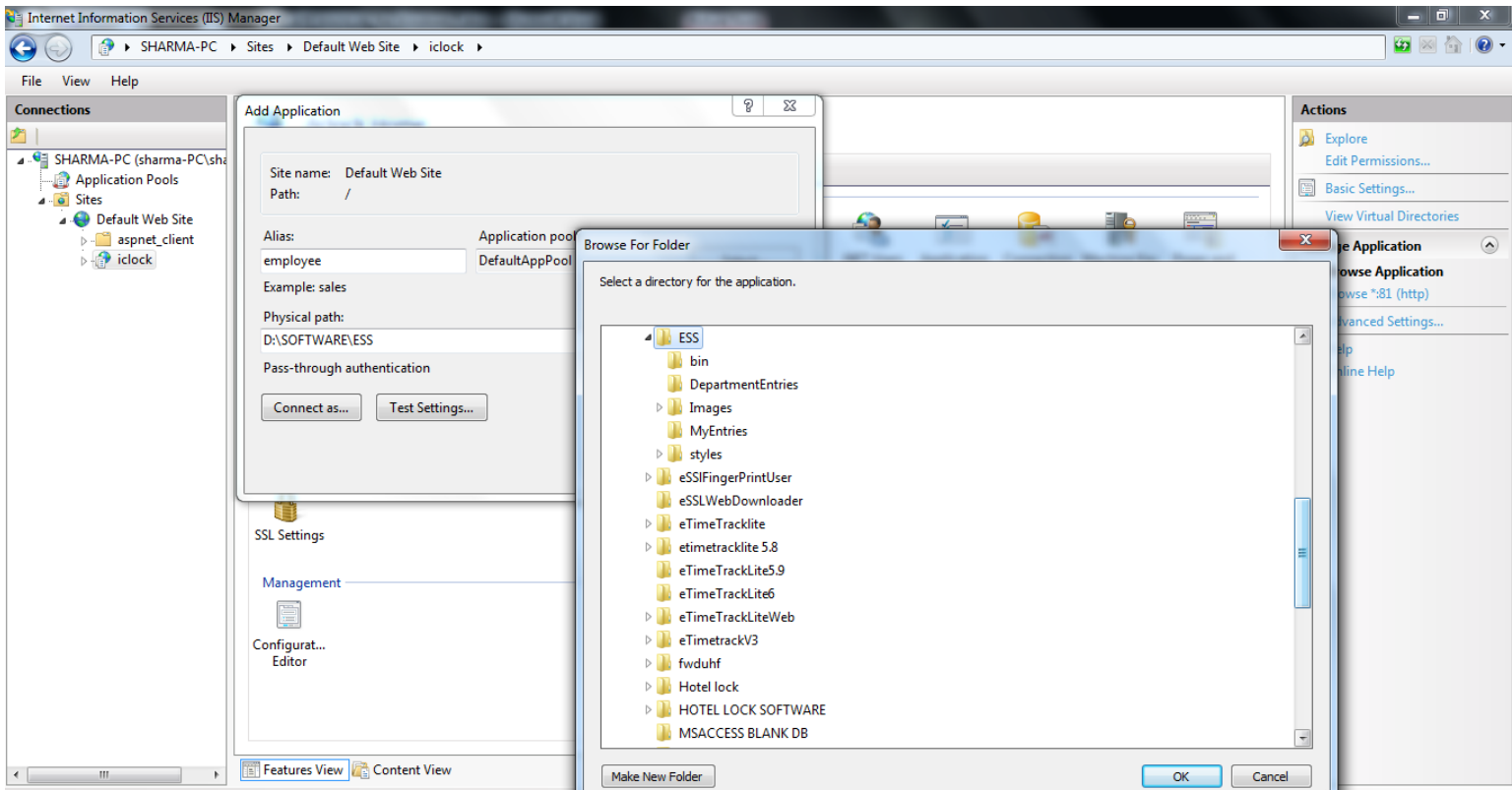
Step – 15

Employee Self Service Module (ESS)

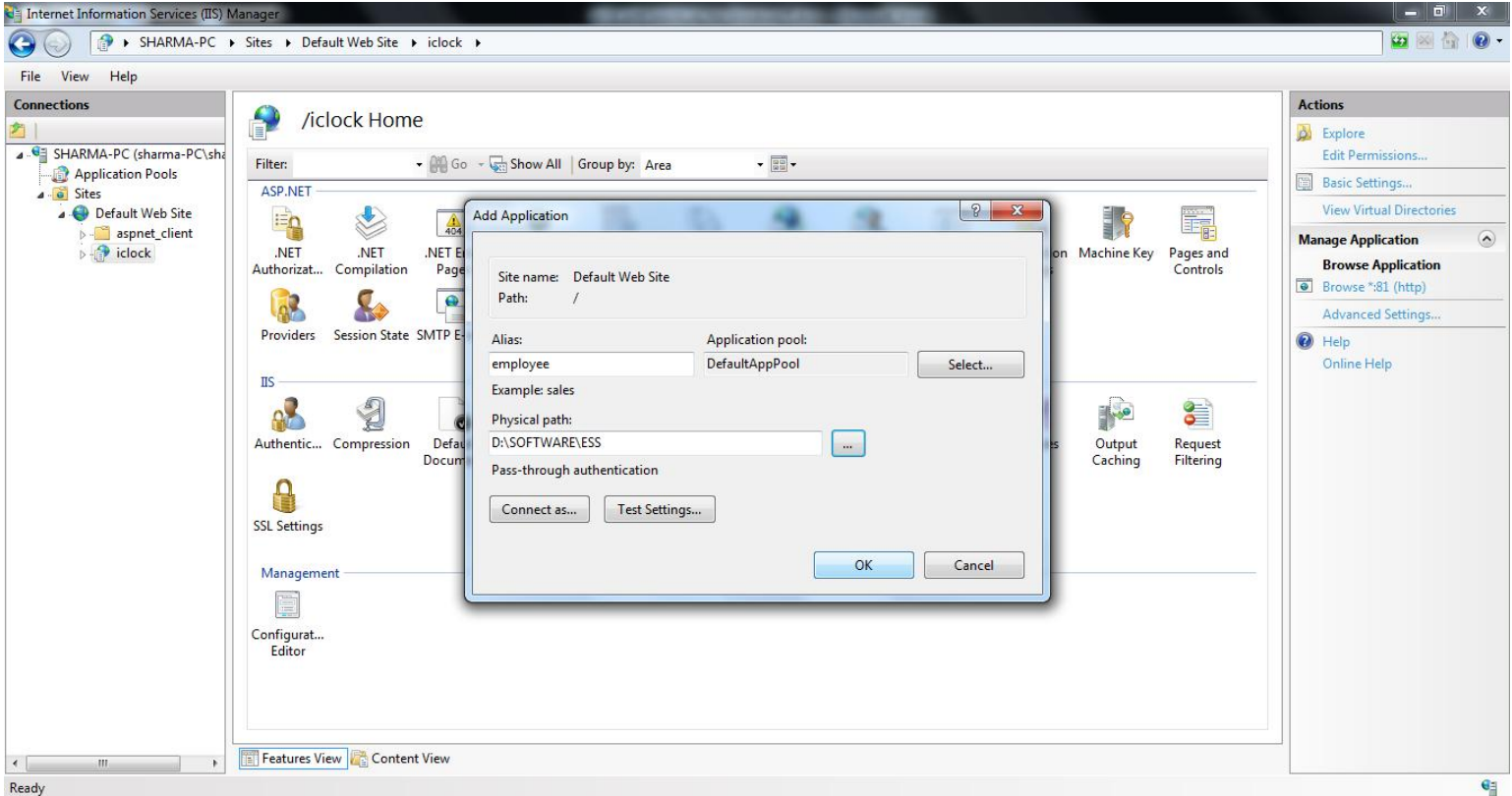
In sites list Right Click on Default Web site --> Click on Add Application... Dialogue Box appears.



Here in this Dialogue box you need to enter Alias Name (employee), Select the path of ESS web Application were you have stored.



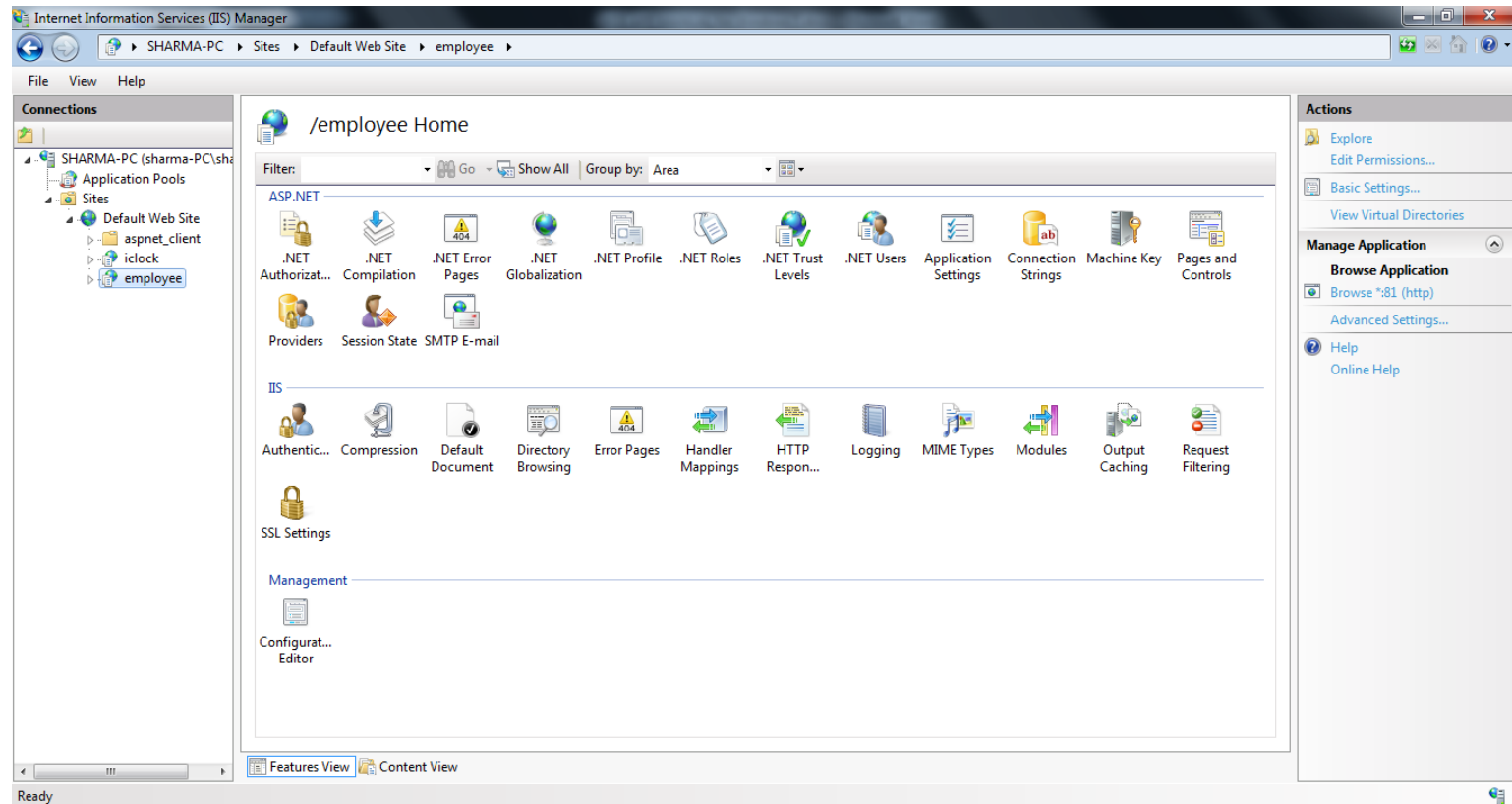
After selecting the physical path click on ‘Ok’.



Step – 16

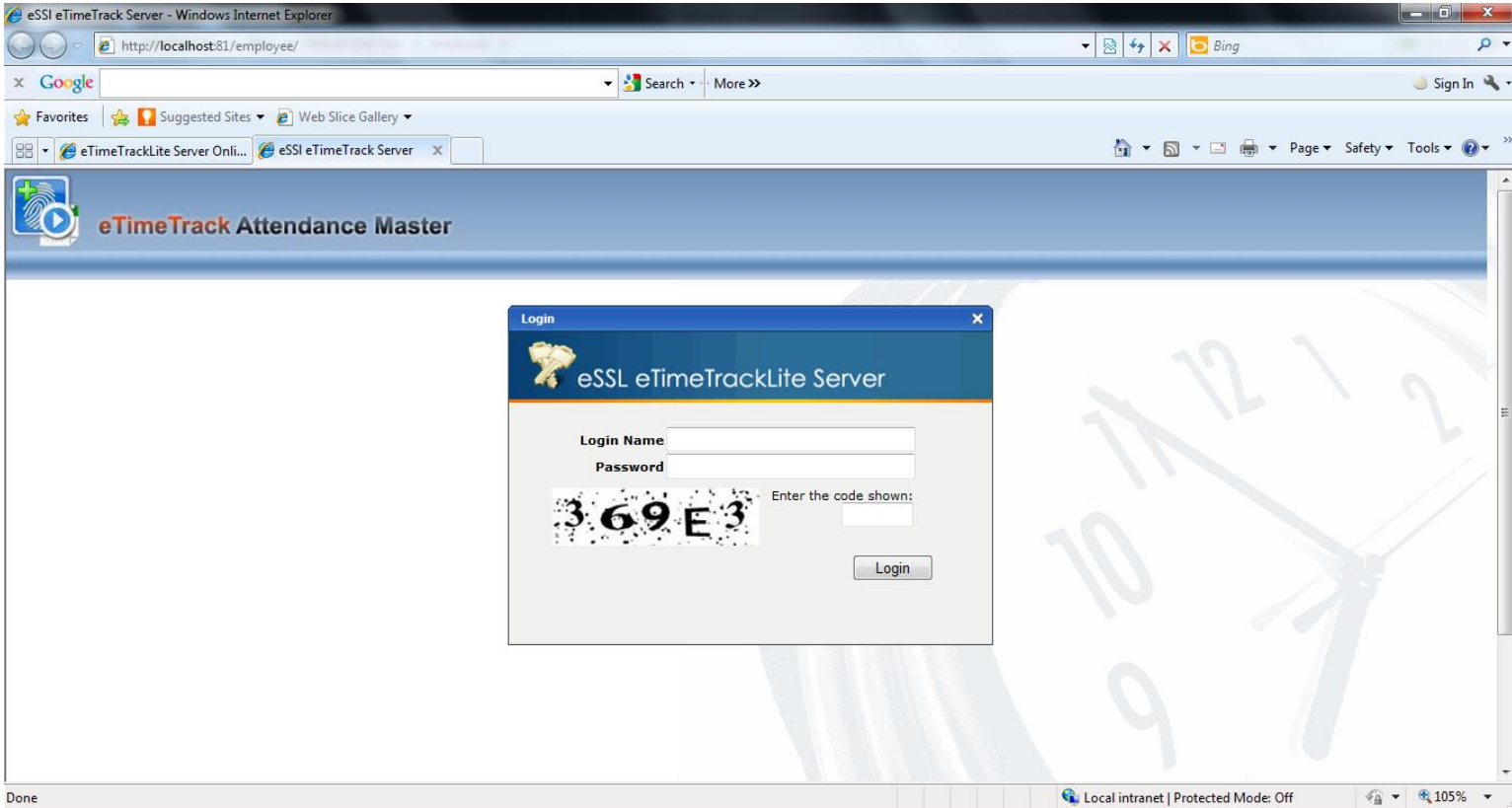
The site will be added, by Alias Name (employee).

Now Click on Alias Name (employee) in Left Hand Panel and On Right Side. Click on “Browse”



This is the LOGIN Screen of ESS Web Application.

NOTE:-Before LOGIN Set the Data Base Setting



Step – 9

To configure database setting use “/databasesettings.aspx” after Alias Name (employee).

For example : [Http://localhost:81/employee/databasesettings.aspx](http://localhost:81/employee/databasesettings.aspx) (:81 is port number)

